

Sahaj Agrawal
sahaj.agrawal@kotak.com
+91 22 6621 6343

Rahul Sharma
sharma.rahul@kotak.com
+91 22 6621 6198

NIFTY DERIVATIVE SNAPSHOT

	NIFTY FUTURE	OI (SHARES)	VOLUME	BASIS	PCR OI	PCR VOL	NIFTY ATM IV (%)	NIFTY HV (%)
CURRENT	4,291	16,323,350	21,659,950	-1.1	0.76	0.91	31.50	38.75
PREVIOUS	4,350	21,402,100	24,818,550	12.75	0.79	0.89	32.50	39.42
% CHANGE	-1.36	-23.73	-12.73	-	-	-	-	-

BRIEF OVERVIEW

- Ahead of the F&O expiry, sideways movement was seen in the Nifty for most of the day. However, selling in the last hour of the session made the index lose its ground and close the day with losses of around a percent.
- Market wide OI stands at Rs. 86,008.11 Crs. Nifty futures OI (combined) was up by 2.59 lakh shares. The basis in the August Nifty futures remained flat whereas the September series futures are trading into a discount of 2-3 points.
- Amongst the Nifty 50 stocks, DRREDDY, HINDALCO, SAIL and HEROHONDA showed some gains whereas DLF, RELINFRA, SBIN, ICICIBANK and UNITECH showed losses.
- On the sectoral front, Active rollovers are witnessed in Real Estate and Infrastructure stocks, Textile and Cement stocks. Media and Chemical-Fertilizers stocks have witnessed low rollovers.
- Active rollovers (more than 90%) are seen in stocks like ULTRACEMCO, GTL and SYDIBANK whereas stocks witnessing higher OI month-on-month are TATATEA, TATACHEM, HINDCALO and MOSERBAER.
- Nifty PCR OI (current month) is trading at 0.76 whereas all series combined Nifty PCROI is currently seen at 0.97. In the August series highest Call OI is at 4500 strike price and highest Put OI is at 4300 strike price.

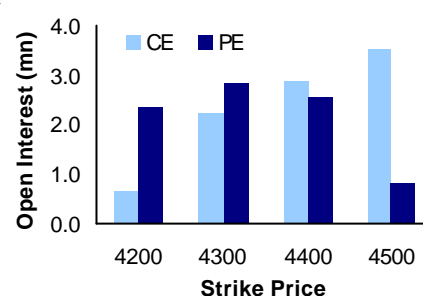
OUTLOOK

- Nifty once again has failed to trade above our important level of 4330 and has settled around the low of 4290 which was the low of the session previous to yesterday. If this level of 4280-4290 is breached then sell off can be seen upto 4192-4113 levels.
- August series total rollovers are seen at 61% and Nifty rollovers are seen at 56% which are in line with previous expiries.
- GRASIM below 1900 can see a further slide upto 1825 levels and MARUTI has strong support at 600 below which it can slide upto 566 levels.

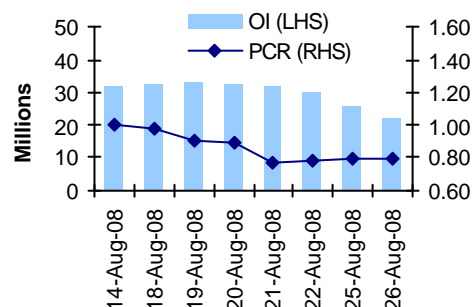
NIFTY LEVELS

4113	4192	4292	4344	4428	4438
------	------	------	------	------	------

NIFTY OPTIONS OI



NIFTY PCR OI



FII DATA

DERIVATIVES (RS CR)

INSTRUMENT	MKT	FII	NET CHG
INDEX FUTURES	16,854	15,994	224
INDEX OPTIONS	37,999	23,632	427
STOCK FUTURES	26,100	18,294	167
STOCK OPTIONS	5,056	945	30

Source: nseindia.com

RECOMMENDATION

STOCK	PATRICULAR	RECOM	CMP	TGT	SL	REMARKS
NIL						

FUTURE STATISTICS

OI INCREASE

SYMBOL	OI (%)	OI (SHARES)	PRICE CHG (%)
PTC	138.75	448,850	-0.45
TV-18	89.51	952,000	-2.43
BAJAJ-AUTO	50.81	55,800	5.42
OPTOCIRCUI	44.69	155,400	-4.34
GSPL	44.22	646,600	0.08
KSK	39.17	256,700	11.03
UTVSOF	28.13	12,300	0.08
NBVENTURES	26.32	57,600	-2.98
GVKPIL	25.63	954,750	-2.64

OI DECREASE

SYMBOL	OI (%)	OI (SHARES)	PRICE CHG (%)
NUCLEUS	-66.26	30,250	1.11
FSL	-37.97	1,885,750	-8.38
INDIANB	-32.25	573,100	-0.48
CORPBANK	-23.53	46,800	1.43
SASKEN	-22.56	690,800	-4.21
SREINTFIN	-18.18	15,750	0.05
SINTEX	-14.49	41,300	-1.93
AXISBANK	-12.80	2,362,500	-0.34
SUNTV	-12.21	187,000	0.79

OPTION STATISTICS

SIGNIFICANT CALL OPEN INTEREST

SYMBOL	STRK PRICE	OPTION TYPE	CLOSE (RS)	FUT CLOSE	OI (SHARES)
INFOSYSTCH	1,800	CA	30.0	1,718	259,400
INFOSYSTCH	1,710	CA	65.6	1,718	207,000
INFOSYSTCH	1,740	CA	50.3	1,718	160,200
RANBAXY	400	CA	111.2	402	835,200
RANBAXY	500	CA	21.2	402	456,000
STER	640	CA	30.0	617	148,263
SATYAMCOMP	400	CA	22.5	407	69,000
ITC	180	CA	12.1	184	280,125
RPL	160	CA	7.7	159	852,575
RPL	170	CA	4.1	159	834,150

SIGNIFICANT PUT OPEN INTEREST

SYMBOL	STRK PRICE	OPTION TYPE	CLOSE (RS)	FUT CLOSE	OI (SHARES)
RANBAXY	400	PA	25.7	402	764,000
RANBAXY	380	PA	15.2	402	507,200
RELIANCE	2,100	PA	65.1	2,163	112,950
RELIANCE	2,160	PA	92.3	2,163	104,025
RELIANCE	2,250	PA	140.0	2,163	84,000
RPL	160	PA	8.3	159	450,575
RPL	150	PA	3.9	159	435,500
RANBAXY	500	PA	104.0	402	96,000
NTPC	170	PA	8.1	169	149,500
TATASTEEL	580	PA	28.7	583	47,750

CASH STATISTICS

TOP VOLUMES

SYMBOL	VOLUME	VALUE	CLOSE
RELIANCE	3,693,248	79,654	2,148
RELCAPITAL	3,174,787	40,950	1,278
ICICIBANK	4,087,188	26,881	650
HDFC	1,109,307	25,924	2,296
INFOSYSTCH	1,372,306	23,481	1,708
RNRL	21,910,859	20,617	93
RELINFRA	1,949,165	19,186	966
LT	721,523	18,796	2,577
RCOM	4,495,604	18,067	398

ABV AVG DELIVERY

SYMBOL	AVG DEL	DELIVERY	PRICE CHG
ORIENTBANK	57,771	611,571	-1.77
STRTECH	12,154	106,317	2.14
FEDERALBNK	74,228	585,925	0.58
ULTRACEMCO	60,470	402,275	0.96
WELGUJ	50,809	337,727	-5.87
NAUKRI	394	2,550	2.25
MATRIXLABS	4,784	26,869	3.53
J&KBANK	2,858	12,982	0.05
BRIGADE	9,815	40,273	3.98

Derivatives Research team**Sahaj Agrawal**

Quantitative Research
sahaj.agrawal@kotak.com
+91 22 6621 6343

Rahul Sharma

Quantitative Research
sharma.rahul@kotak.com
+91 22 6621 6198

K. Kathirvelu

Production
k.kathirvelu@kotak.com
+91 22 6621 6311

Disclaimer

This document is not for public distribution and has been furnished to you solely for your information and must not be reproduced or redistributed to any other person. Persons into whose possession this document may come are required to observe these restrictions.

This material is for the personal information of the authorized recipient, and we are not soliciting any action based upon it. This report is not to be construed as an offer to sell or the solicitation of an offer to buy any security in any jurisdiction where such an offer or solicitation would be illegal. It is for the general information of clients of Kotak Securities Ltd. It does not constitute a personal recommendation or take into account the particular investment objectives, financial situations, or needs of individual clients.

We have reviewed the report, and in so far as it includes current or historical information, it is believed to be reliable though its accuracy or completeness cannot be guaranteed. Neither Kotak Securities Limited, nor any person connected with it, accepts any liability arising from the use of this document. The recipients of this material should rely on their own investigations and take their own professional advice. Price and value of the investments referred to in this material may go up or down. Past performance is not a guide for future performance. Transactions involving futures, options and other derivatives involve substantial risk and are not suitable for all investors. Reports based on technical analysis centers on studying charts of a stock's price movement and trading volume, as opposed to focusing on a company's fundamentals.

Opinions expressed are our current opinions as of the date appearing on this material only. While we endeavor to update on a reasonable basis the information discussed in this material, there may be regulatory, compliance, or other reasons that prevent us from doing so. Prospective investors and others are cautioned that any forward-looking statements are not predictions and may be subject to change without notice. Our proprietary trading and investment businesses may make investment decisions that are inconsistent with the recommendations expressed herein. Kotak Securities has two independent equity research groups: Institutional Equities and Private Client Group. This report has been prepared by the Private Client Group. The views and opinions expressed in this document may or may not match or may be contrary with the views, estimates, ratings, and target price of the Institutional Equity Research Group of Kotak Securities Limited.

We and our affiliates, officers, directors, and employees world wide may: (a) from time to time, have long or short positions in, and buy or sell the securities thereof, of company (ies) mentioned herein or (b) be engaged in any other transaction involving such securities and earn brokerage or other compensation or act as a market maker in the financial instruments of the company (ies) discussed herein or act as advisor or lender or borrower to such company (ies) or have other potential conflict of interest with respect to any recommendation and related information and opinions.

Kotak Securities Limited generally prohibits its analysts from maintaining financial interest in the securities or derivatives of any of the companies that the analysts cover. The analyst for this report certifies that all of the views expressed in this report accurately reflect his or her personal views about the subject company or companies and its or their securities, and no part of his or her compensation was, is or will be, directly or indirectly related to specific recommendations or views expressed in this report.

No part of this material may be duplicated in any form and/or redistributed without Kotak Securities' prior written consent.
