

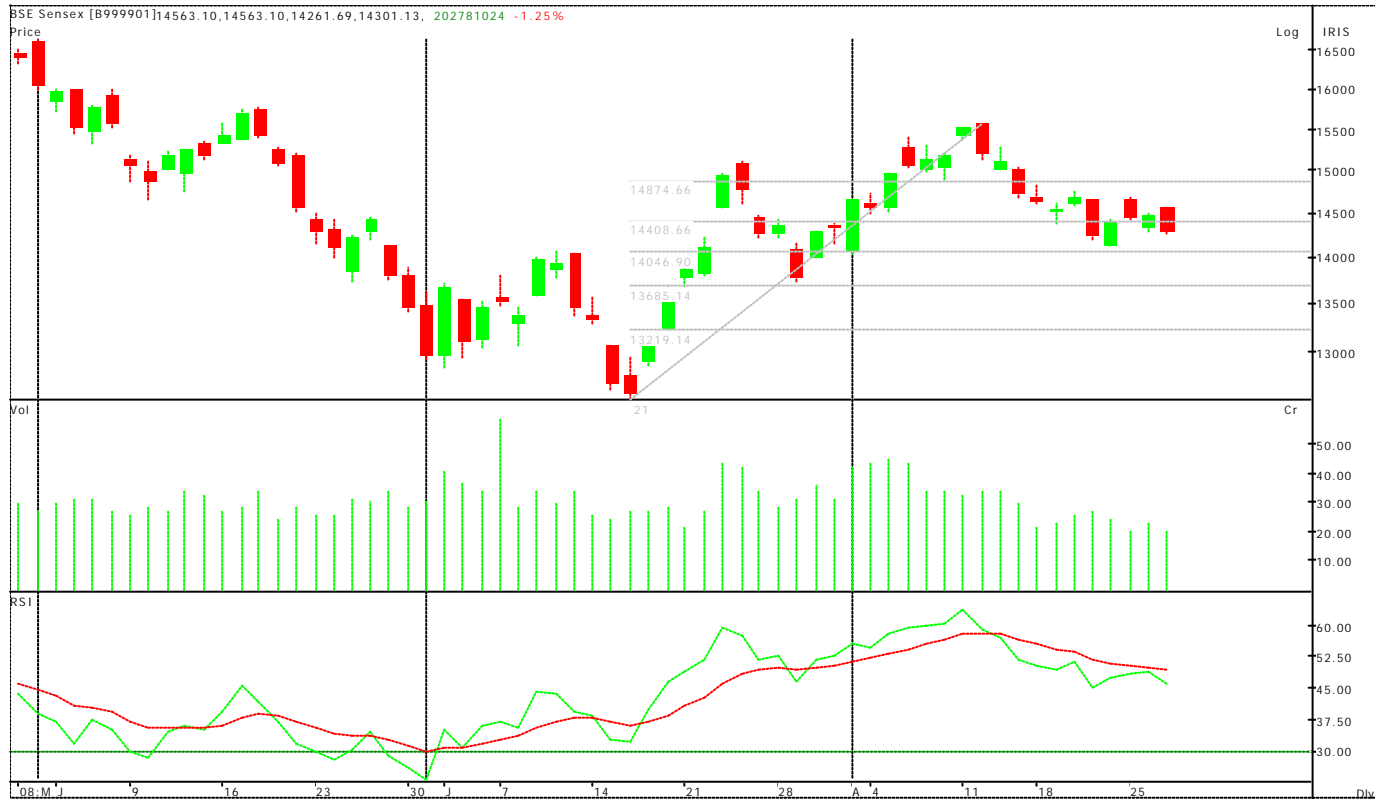
**INDEX RANGE**  
**NIFTY** : 4292  
 Range : 4280-4365  
 Resistance: 4315-4345-4400-4448  
 Support : 4280-4245-4180-4150

**SENSEX** : 14297  
 Range : 14260-14550  
 Resistance : 14260-14550-14745-14860  
 Support : 14260-14130-13950-13730

**Shrikant Chouhan**  
 shrikant.chouhan@kotak.com  
 +91 22 6621 6360

*"The future belongs to those who prepare for it today."*

**BSE daily chart**



**The markets on August 27:** Failed to close above 4320

**Looking Ahead:** The market is not able to break the trading range at either side however; one must be prepared to digest huge volatility if it breaks the same. The levels 4280 and 4330 may act as a major support and resistance for the market. Sustainance below 4320 may be an early indication to reduce trading long positions.

**Trading calls**

Stock	Recommendation
NIL	

These trading calls are based on cash but clients can trade in futures also with the support of the above mentioned prices.

**Trading Tool**

Stock	Extreme	Probable	Achievable	Closings	Achievable	Probable	Extreme	Final Stop Loss
NIFTY (AUG-F)	4244	4260	4272	4299	4326	4338	4358	4279
RELIANCE	2066	2092	2121	2148	2175	2204	2230	2053
SAIL	144.4	147.6	149.1	152	154.9	156.4	159.6	143.5
TATASTEEL	559	566	574	581	588	596	603	555
HDFC	2208	2239	2268	2296	2324	2353	2384	2195
ONGC	969	981	995	1007	1019	1033	1045	963
M&M	554	561	569	576	583	591	598	551
MARUTI	602	610	618	626	634	642	650	598
TATAMOTORS	407	412	418	423	428	434	439	404
DLF	461	469	473	479	485	489	497	458
UNITECH	150	153	154	156	158	159	162	149.1
CHAMBALFERT	70	71	72	73	74	76	78	69.6
GMRINFRA	96	97	98	100	101	104	107	95.4
RPL	152	154	156	158	160	162	169	151.0
INDIAINFO	124	126	127	129	131	134	137	123
TECHM	735	748	762	778	788	808	832	731
RELCAPITAL	1229	1252	1262	1278	1294	1327	1357	1222
PUNJLLOYD	266	270	277	284	291	295	302	265
LT	2418	2510	2545	2577	2609	2644	2736	2403
SBIN	1264	1296	1315	1331	1347	1366	1398	1257
ICICIBANK	618	625	631	650	669	675	683	614
INFOSYSTCH	1643	1674	1687	1708	1729	1742	1773	1633
SATYAMCOMP	390	397	400	405	410	413	420	387
TCS	787	802	808	818	828	834	849	782
ACC	537	547	551	558	565	569	579	533
AMBUJACEM	75.1	76.0	78.0	80	82.0	83.0	84.9	74.6
GRASIM	1875	1910	1925	1949	1973	1988	2023	1863
BHEL	1618	1648	1661	1682	1703	1716	1746	1608
REL	929	947	954	966	978	985	1003	923
TATAPOWER	973	992	999	1012	1025	1032	1051	967

- Achievable** = Which can be achieved if the stock trades above or below the closing price. (Trade as per trend of the market)
- Probable** = Which can be probably achieved if the stock trades above or below the closing price. (If the prevailing trend of the market is in force)
- Extreme** = Here traders can go short (higher side) or long (lower side) with minimal stop loss.
- Final Stop Loss** = It's a system generated stop loss level which traders can use to exit from long positions.

**Research Team**

<b>Dipen Shah</b> IT, Media, Telecom dipen.shah@kotak.com +91 22 6621 6301	<b>Awadhesh Garg</b> Pharmaceuticals, Hotels awadhesh.garg@kotak.com +91 22 6621 6304	<b>Saurabh Agrawal</b> Metals, Mining agrawal.saurabh@kotak.com +91 22 6621 6309	<b>Siddharth Shah</b> Telecom siddharth.s@kotak.com +91 22 6621 6307
<b>Sanjeev Zarbade</b> Capital Goods, Engineering sanjeev.zarbade@kotak.com +91 22 6621 6305	<b>Apurva Doshi</b> Logistics, Textiles, Mid Cap doshi.apurva@kotak.com +91 22 6621 6308	<b>Saday Sinha</b> Banking, Economy saday.sinha@kotak.com +91 22 6621 6312	<b>Shrikant Chouhan</b> Technical analyst shrikant.chouhan@kotak.com +91 22 6621 6360
<b>Teena Virmani</b> Construction, Cement, Mid Cap teena.virmani@kotak.com +91 22 6621 6302	<b>Saurabh Gurnurkar</b> IT, Media, Telecom saurabh.gurnurkar@kotak.com +91 22 6621 6310	<b>Sarika Lohra</b> NBFCs sarika.lohra@kotak.com +91 22 6621 6313	<b>K. Kathirvelu</b> Production k.kathirvelu@kotak.com +91 22 6621 6311

**Disclaimer**

This document is not for public distribution and has been furnished to you solely for your information and must not be reproduced or redistributed to any other person. Persons into whose possession this document may come are required to observe these restrictions.

This material is for the personal information of the authorized recipient, and we are not soliciting any action based upon it. This report is not to be construed as an offer to sell or the solicitation of an offer to buy any security in any jurisdiction where such an offer or solicitation would be illegal. It is for the general information of clients of Kotak Securities Ltd. It does not constitute a personal recommendation or take into account the particular investment objectives, financial situations, or needs of individual clients.

We have reviewed the report, and in so far as it includes current or historical information, it is believed to be reliable though its accuracy or completeness cannot be guaranteed. Neither Kotak Securities Limited, nor any person connected with it, accepts any liability arising from the use of this document. The recipients of this material should rely on their own investigations and take their own professional advice. Price and value of the investments referred to in this material may go up or down. Past performance is not a guide for future performance. Certain transactions - including those involving futures, options and other derivatives as well as non-investment grade securities - involve substantial risk and are not suitable for all investors. Reports based on technical analysis centers on studying charts of a stock's price movement and trading volume, as opposed to focusing on a company's fundamentals and as such, may not match with a report on a company's fundamentals.

Opinions expressed are our current opinions as of the date appearing on this material only. While we endeavor to update on a reasonable basis the information discussed in this material, there may be regulatory, compliance, or other reasons that prevent us from doing so. Prospective investors and others are cautioned that any forward-looking statements are not predictions and may be subject to change without notice. Our proprietary trading and investment businesses may make investment decisions that are inconsistent with the recommendations expressed herein.

Kotak Securities Limited has two independent equity research groups: Institutional Equities and Private Client Group. This report has been prepared by the Private Client Group. The views and opinions expressed in this document may or may not match or may be contrary with the views, estimates, rating, target price of the Institutional Equities Research Group of Kotak Securities Limited.

We and our affiliates, officers, directors, and employees world wide may: (a) from time to time, have long or short positions in, and buy or sell the securities thereof, of company (ies) mentioned herein or (b) be engaged in any other transaction involving such securities and earn brokerage or other compensation or act as a market maker in the financial instruments of the company (ies) discussed herein or act as advisor or lender / borrower to such company (ies) or have other potential conflict of interest with respect to any recommendation and related information and opinions.

The analyst for this report certifies that all of the views expressed in this report accurately reflect his or her personal views about the subject company or companies and its or their securities, and no part of his or her compensation was, is or will be, directly or indirectly related to specific recommendations or views expressed in this report.

No part of this material may be duplicated in any form and/or redistributed without Kotak Securities' prior written consent.